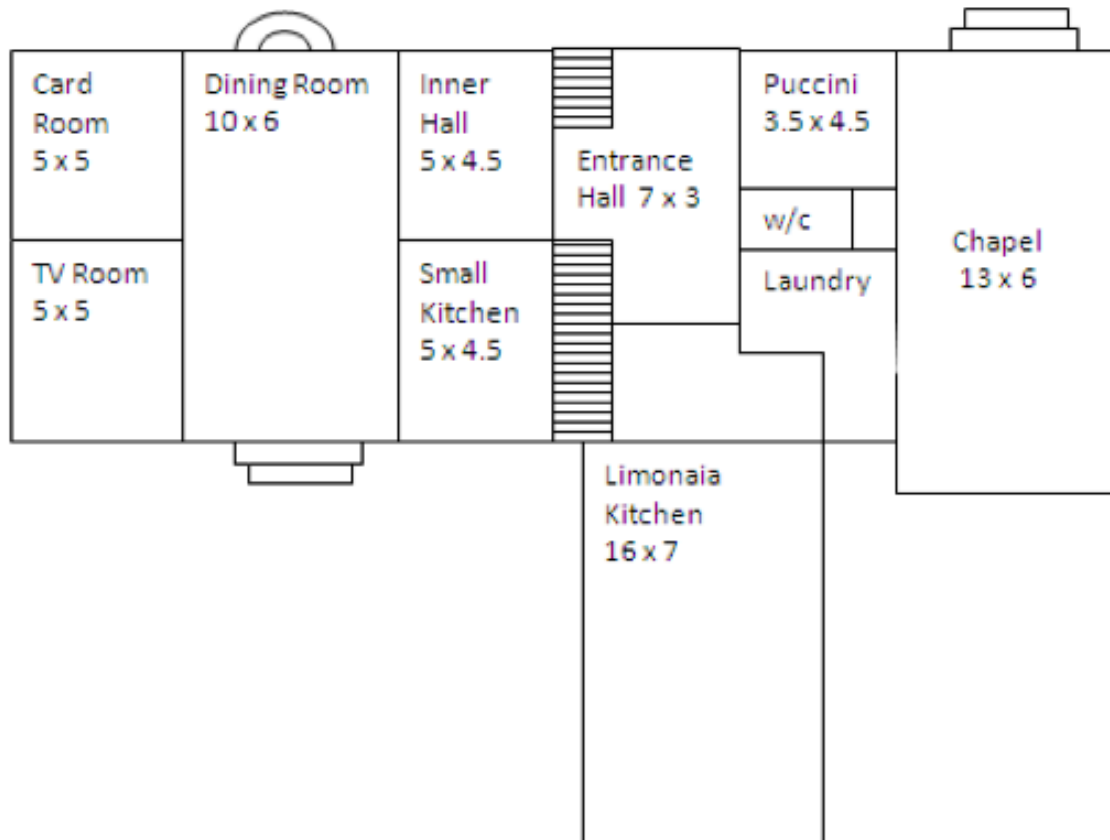




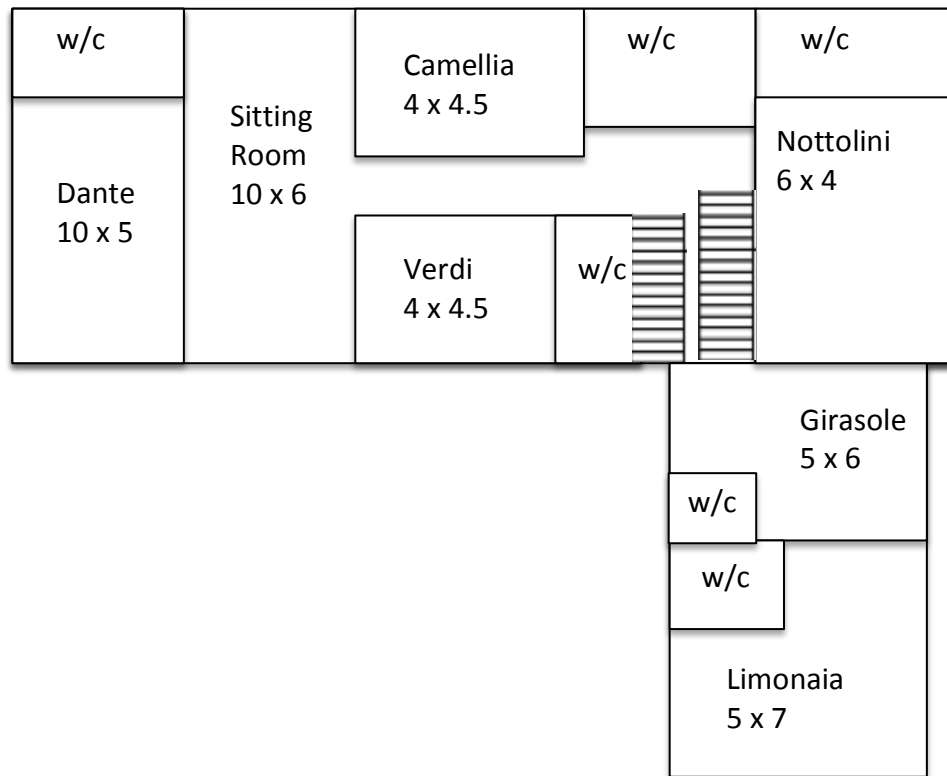
## Villa Michaela Floorplan

Plans not to scale. All measurements in metres.

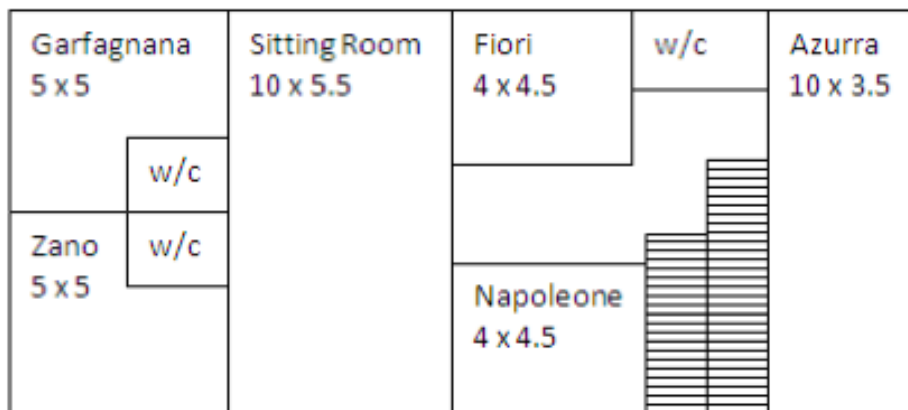
### Ground Floor



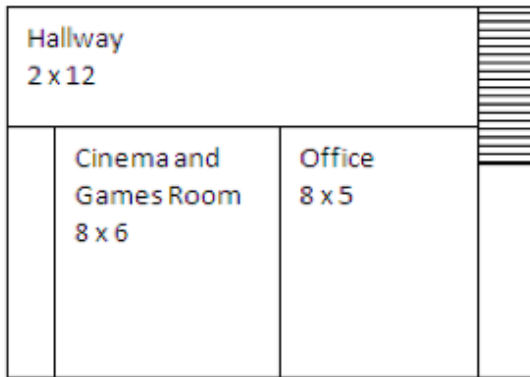
**First Floor**



**Second Floor**



### Lower Ground Floor



### Ground Floor

Puccini (Double/Twin Room): Twin beds 3ft wide and en suite bathroom with bath

#### First Floor Landing:

Girasole (Deluxe Double/Twin Room): Twin beds 3ft wide and en suite bathroom with shower only

Limonaia (Suite): Suite Super king 6ft wide double bed and en suite bathroom with bath and separate shower

#### First Floor:

Nottolini (Deluxe Double Room): 6ft wide double bed with en suite bathroom with bath.

Verdi (Deluxe Double Room): 6ft wide double bed with en suite shower only

Camelia (Deluxe Double Room): 6ft wide double bed with en suite bathroom with bath

Dante (Deluxe Suite): 6ft wide double bed with en suite bathroom with separate shower and double bath

#### Top Floor:

Azurra (Suite): 6ft wide double bed with en suite bathroom with bath and separate shower

Napoleone (Double/Twin Room): Twin beds 3ft wide (Napoleone and Fiori share a shower room)

Fiori (Double/Twin Room): 5ft 6in wide double bed (Napoleone and Fiori share a shower room)

Garfagnana (Deluxe Double Room): 6ft wide double bed with en suite bathroom with bath

Zano (Deluxe Double Room): 6ft wide double bed with en suite bathroom with bath

### **Reception Room Details**

Family Dining Room - Intimate dining for six

Formal Dining Room - Features three crystal chandeliers. Seats up to 40.

Card Room/Library - Library and bridge table

Television Room - With full SKY television

Family Kitchen - Kitchen with seating for six

Limonaia Kitchen - Large main villa Tuscan demonstration kitchen with seating for 18

Lower Ground Floor Entertainment Room - Features American pool table and cinema with seating for 20

First Floor Drawing Room - With grand piano

Consecrated Chapel - With grand piano

Swimming pool - With separate children's pool

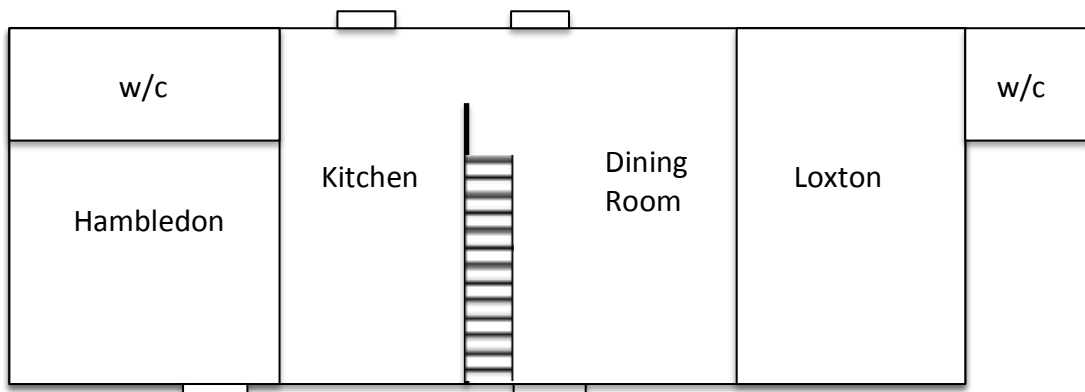
Tennis court - Astro-turf tennis court with lighting

Car Park - Separate parking

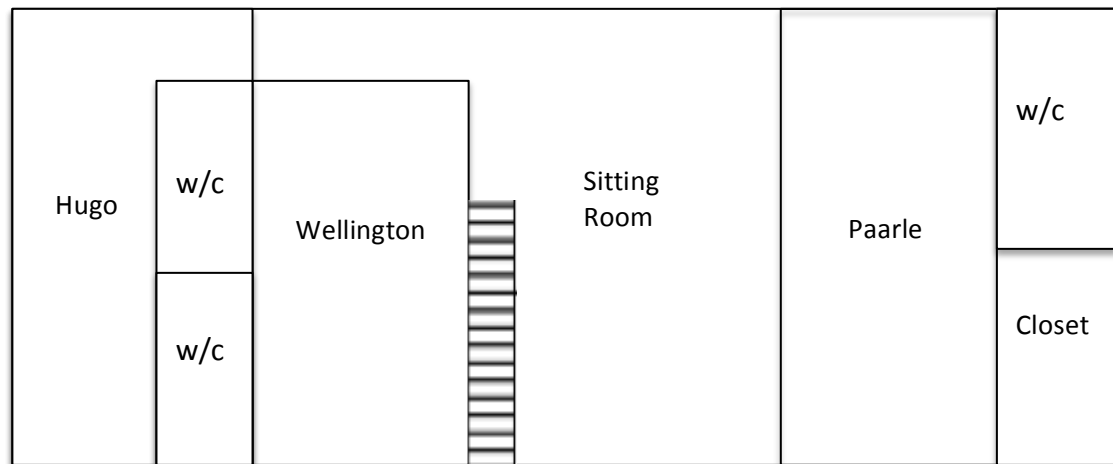
### **Casa Una Floorplan**

Plans not to scale. All measurements in metres.

#### **Ground Floor**



### First Floor



### Ground Floor

Loxton (Deluxe Double/Twin Room): Twin beds 3ft wide and en suite bathroom with shower

Hambledon (Deluxe Double Room): 6ft wide double bed with en suite bathroom with bath and shower

### First Floor:

Paarl (Deluxe Double Room): 6ft wide double bed with en suite bathroom with bath and shower

Wellington (Deluxe Double Room): 6ft wide double bed with en suite bathroom with shower

Hugo (Deluxe Triple Room): Three single 3ft wide beds and en suite bathroom with shower

### Reception Room Details

Dining Room – Intimate dining for six

Sitting Room –

Kitchen – With seating for six

Grounds

